

PORTFOLIO MODEL AGENCY

YOUNG ADULT

CONFIDENCE / PRESENTATION / GROOMING WORKSHOP



Portfolio
MODELS & TALENT

PORTFOLIO



Situated in the central city of Christchurch, Portfolio is the South Island and Christchurch's premier Agency and Modelling School having provided the local, national and international industry with top quality and professional talent since 1992 when the Agency was first established. Our Agency is fully equipped with a catwalk, outdoor courtyard, easy access, front door parking, and plenty of space for meetings and castings.

Director Mel Radford Brown was one of the first models on the books at Portfolio when the agency first opened in 1992. Mel is also strongly assisted in the Agency by top Model also with International experience, Rebecca Dore who is the Agency booker.

*THE COURSE COVERS THE
FOLLOWING*

Confidence

Grooming

Presentation

Department

Etiquette

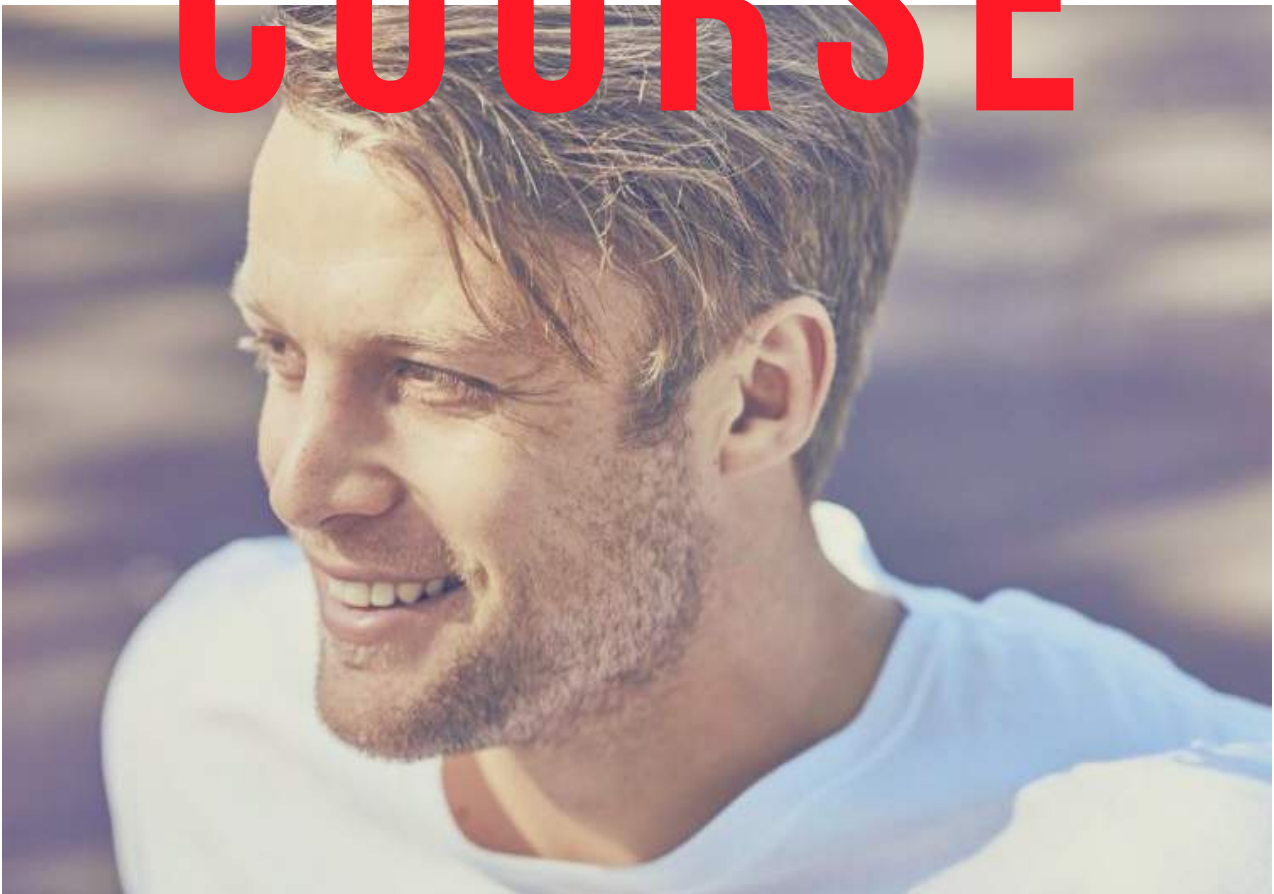
Job Interviews

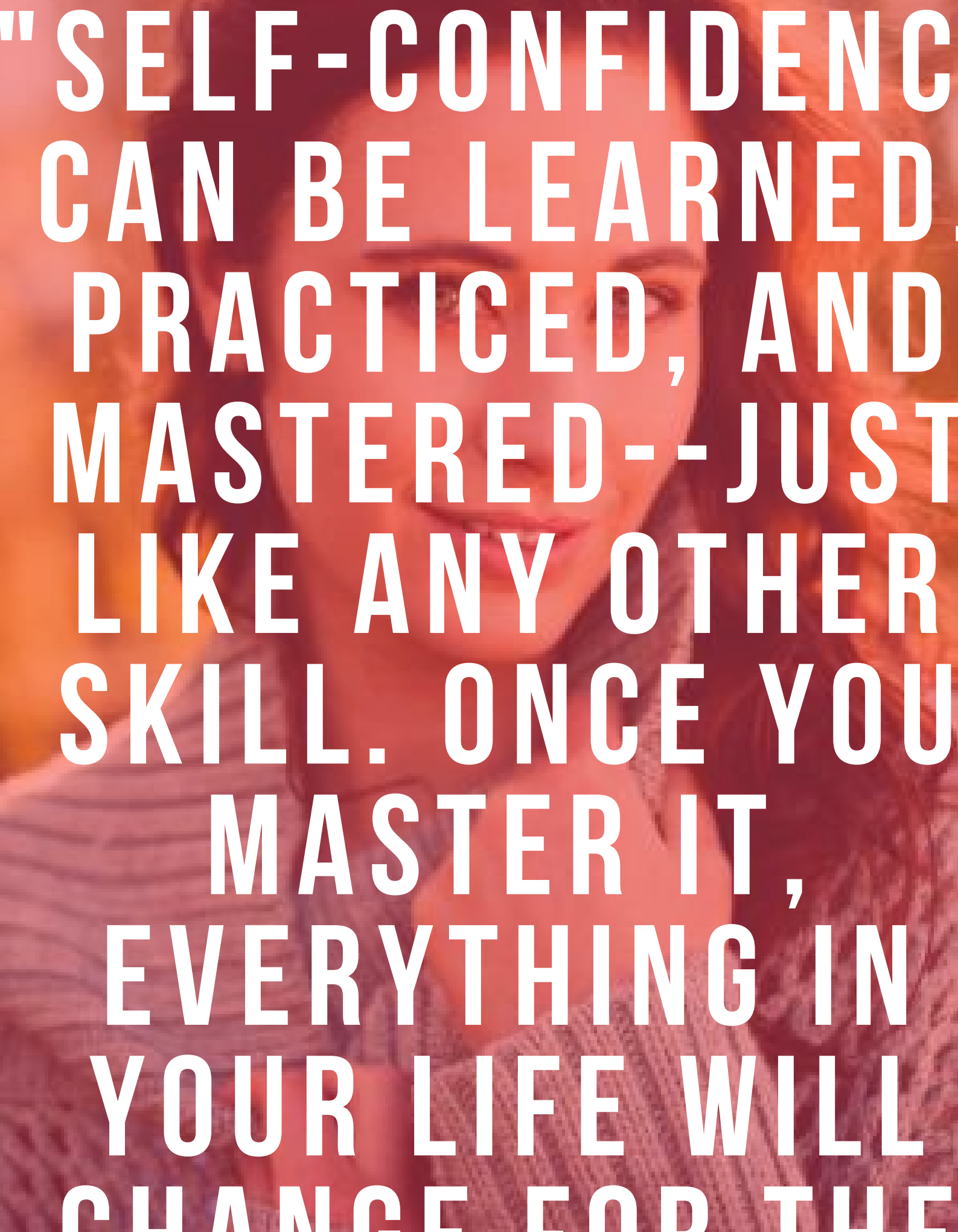
CV headshots *

Light refreshments provided

** OPTIONAL AND AVAILABLE AT ADDITIONAL COST*

COURSE





"SELF-CONFIDENCE
CAN BE LEARNED,
PRACTICED, AND
MASTERED--JUST
LIKE ANY OTHER
SKILL. ONCE YOU
MASTER IT,
EVERYTHING IN
YOUR LIFE WILL
CHANGE FOR THE

BOOKINGS



*FOR 2018 BOOKINGS AND FEES, PLEASE
SEE OUR WEBSITE FOR FURTHER INFORMATION*

To make a booking, please
contact the Portfolio office
033799011
info@portfoliomodels.co.nz
\$129 including GST

A \$50 deposit or full payment
to secure your space on the
course. Payment plans are
available (please enquire)

Course fees must be paid in
full prior to the course
commencing.

Please note in case of illness/non-attendance on the course, we can happily transfer to another suitable course date. Due to popularity and demand, we are unable to refund. All courses need a min of 7 students to run successfully. Portfolio have the right to postpone or cancel a course that is not deemed profitable.